

# Top 10 Reasons

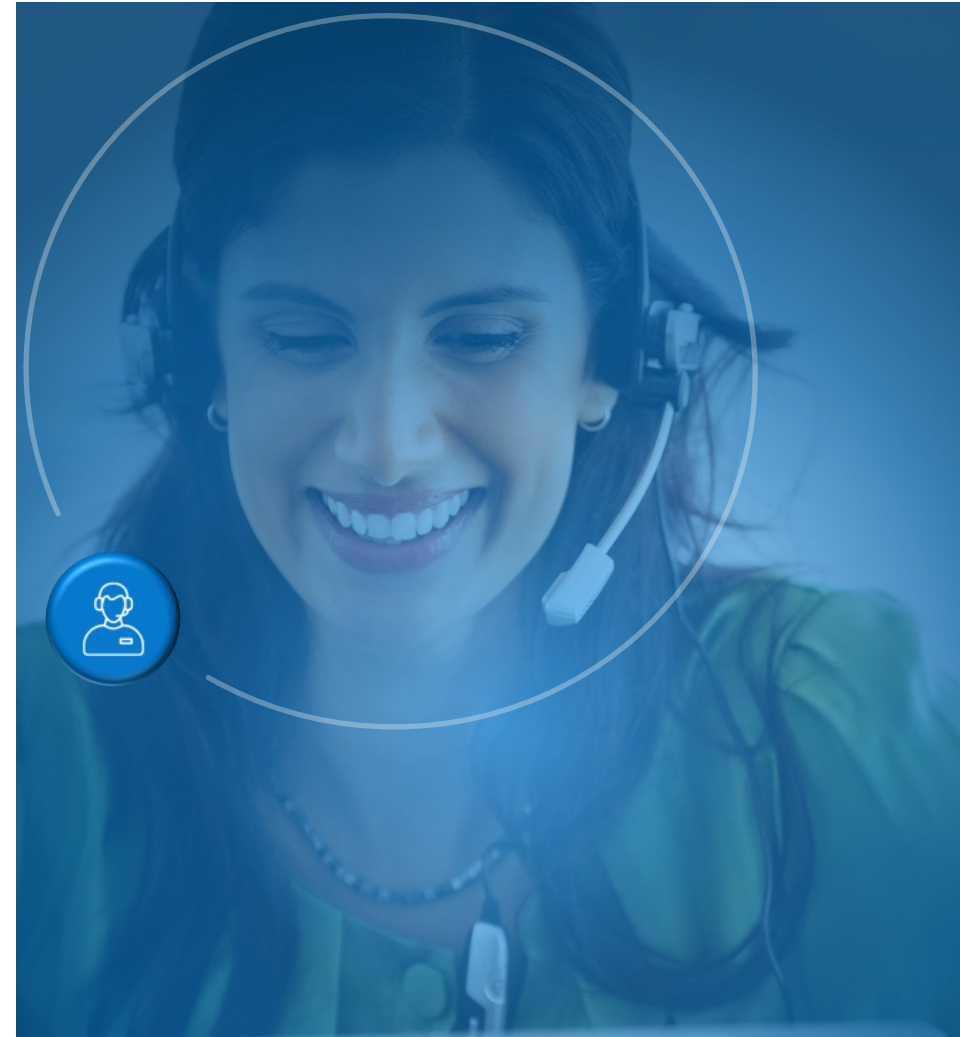
---

- **Dental Premium Holiday** – thru 1/2021
  - No impact Broker commission!
- **Specialty Broker Bonus** – thru 1/2021
  - In addition to existing broker bonus program
- **Dental Net** – over 500+ covered services
- **Metallic PPO plan** – Complete Network
  - Unlimited Plans
  - 90<sup>th</sup> OON and MAC Plans
  - Implants, white fillings, annual max carryover
- **TeleDentistry and Ortho@home**
- **Blue View Vision** - Frame allowances up to \$200 + 20%
- **Life and Disability**– Robust and flexible designs - 2-100
  - Voluntary starts with 10+ eligible
  - EAP with 3 face to face including LiveHealth online.
- **Relaxed Participation** –
  - 25% for groups with 5+ eligible; 65% for 2-4
  - no contribution required for dental/vision
- **5% bundling discounts** for a better bottom line, includes dental plus another line of specialty
- **Anthem Whole Health Connection** connecting medical, dental, vision, life and disability where we deliver better health, lower costs, and a better experience

**Anthem Connect Sales & Service Team**

**877-567-1802**

**[Connect@anthem.com](mailto:Connect@anthem.com)**



The Anthem Connect team will work with you and/or your GA Partners, providing you the most competitive rates and plans!